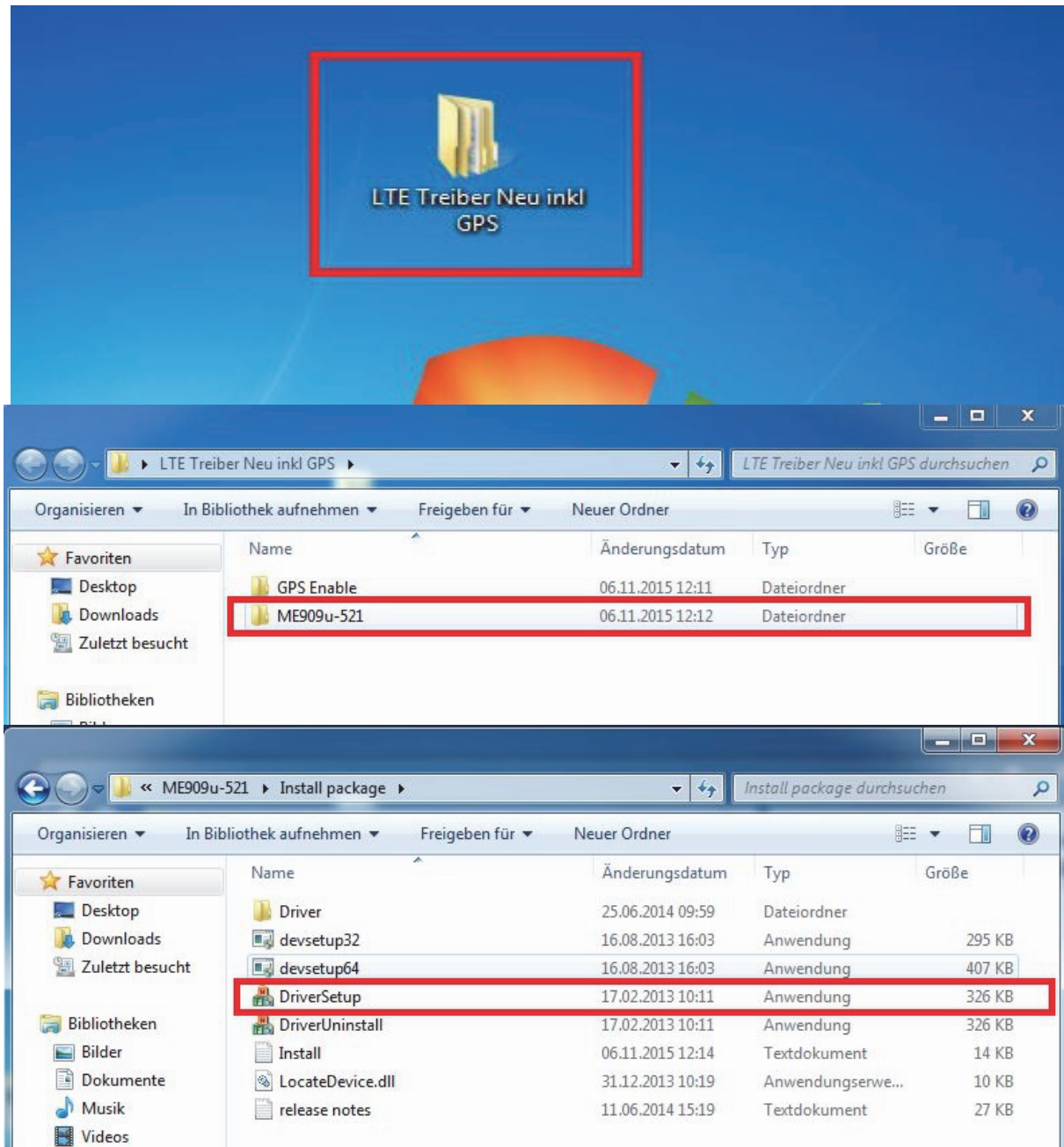
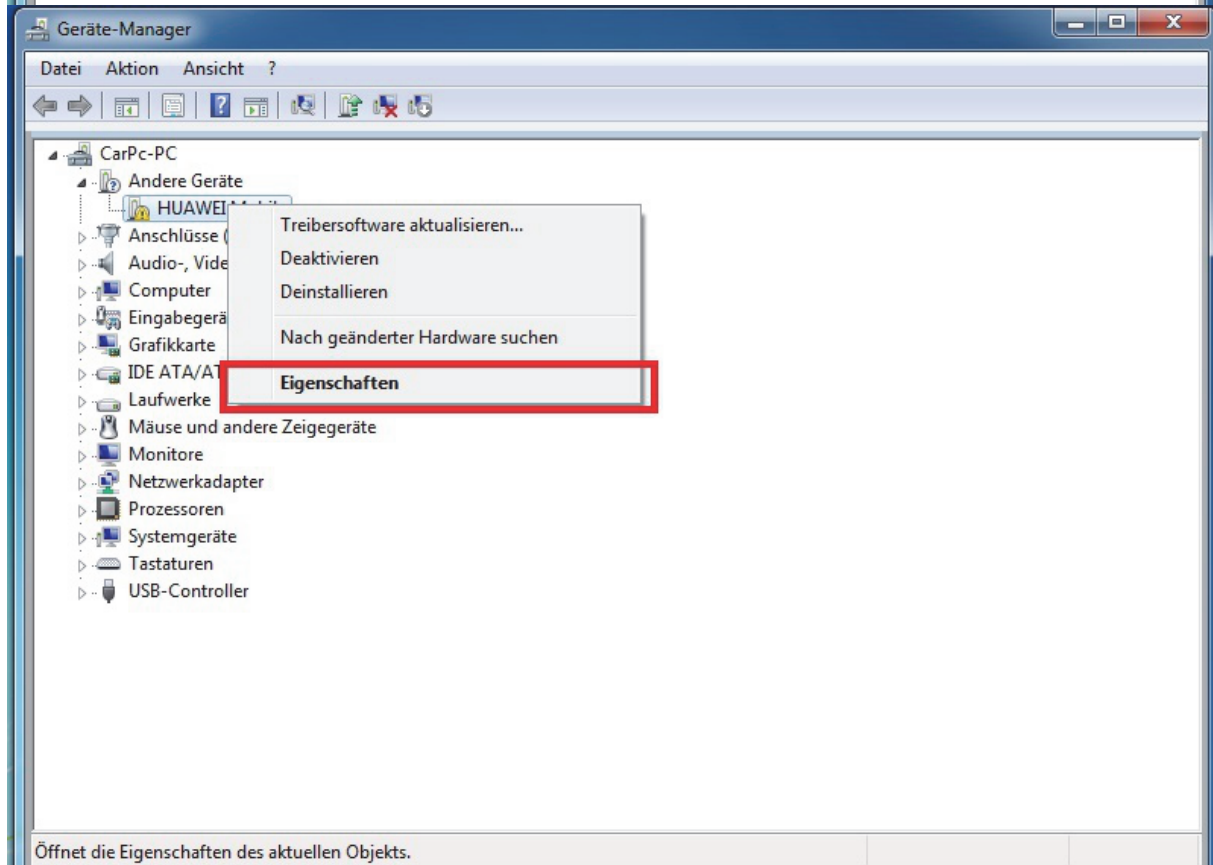
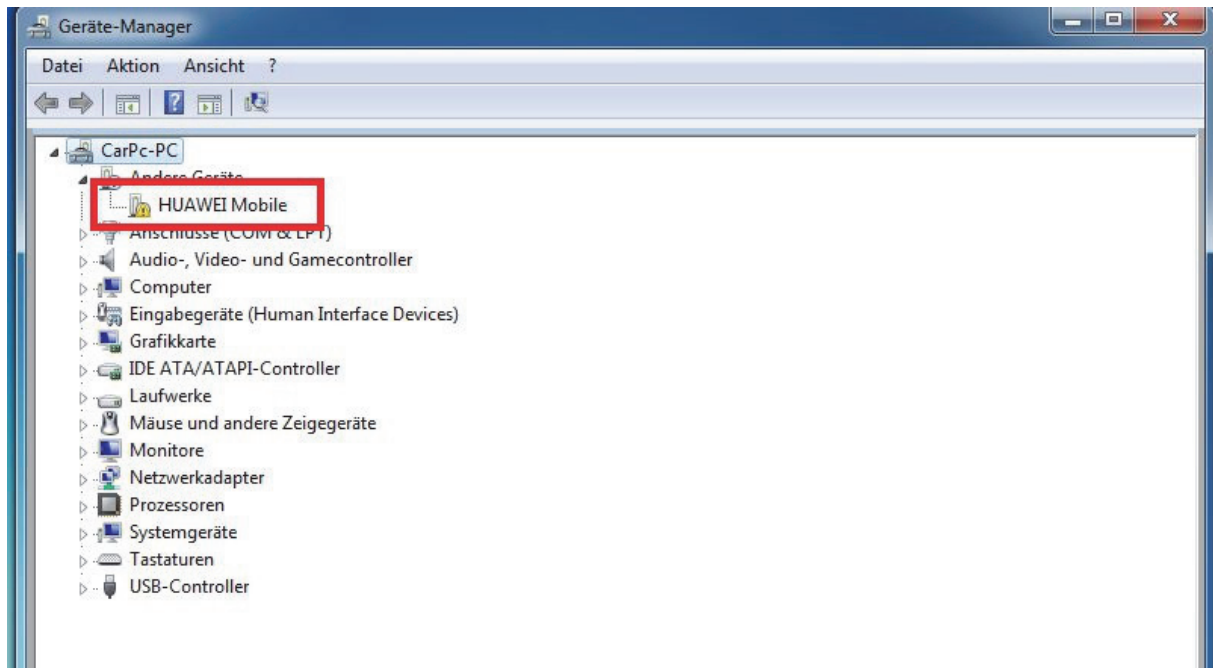


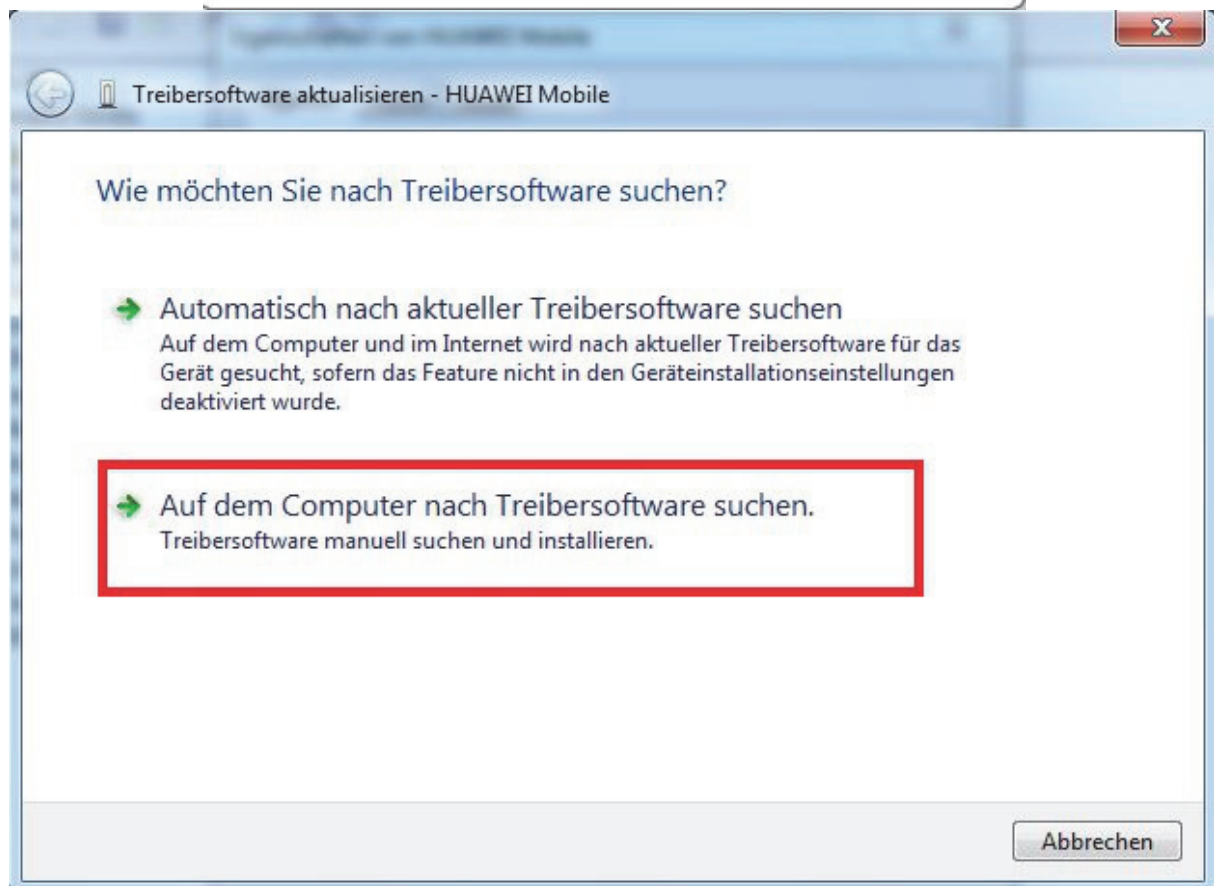
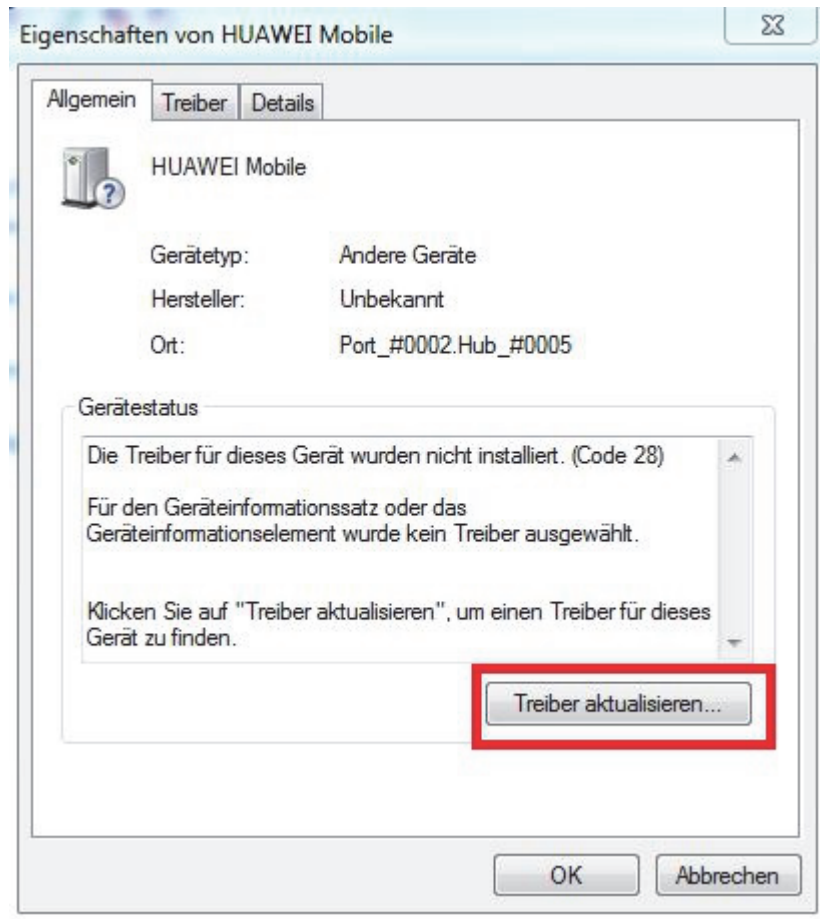
Install Huawei ME909u-521

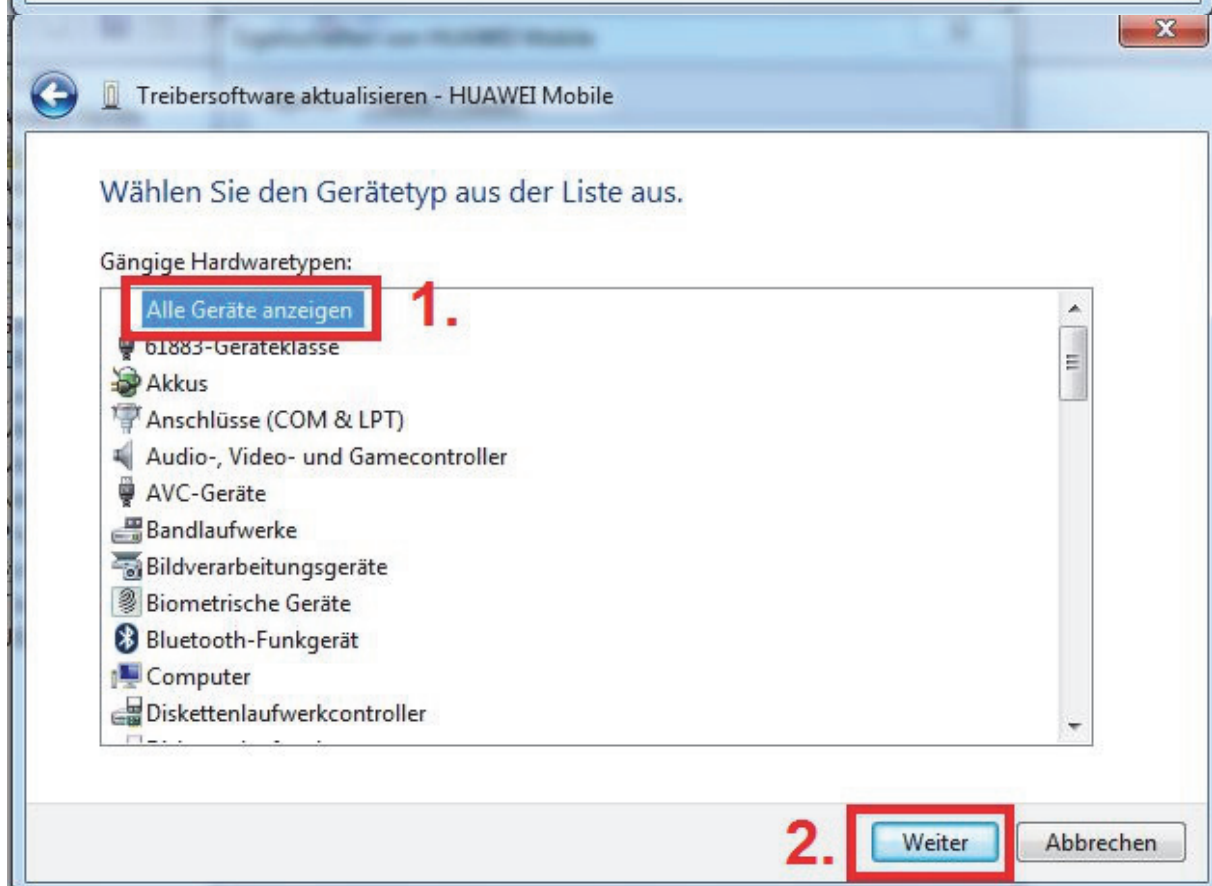
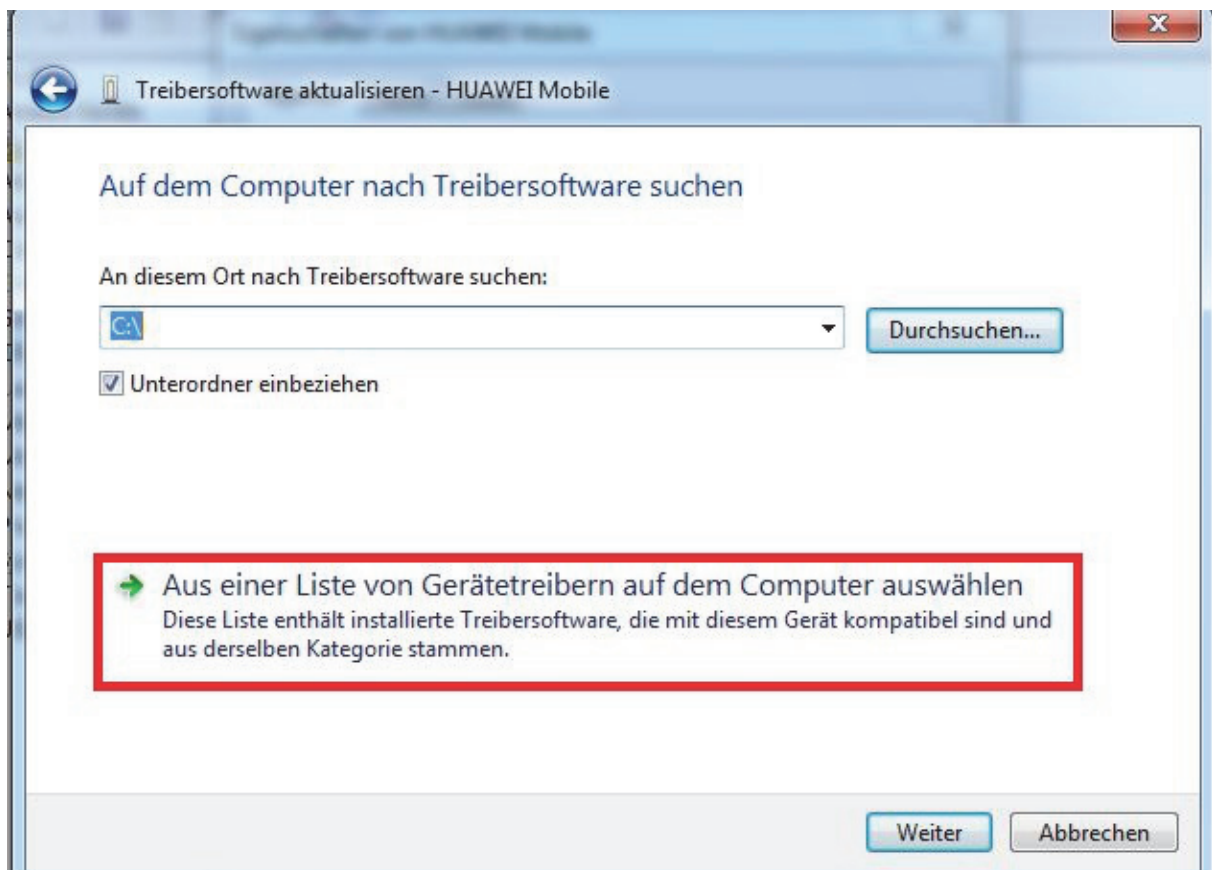


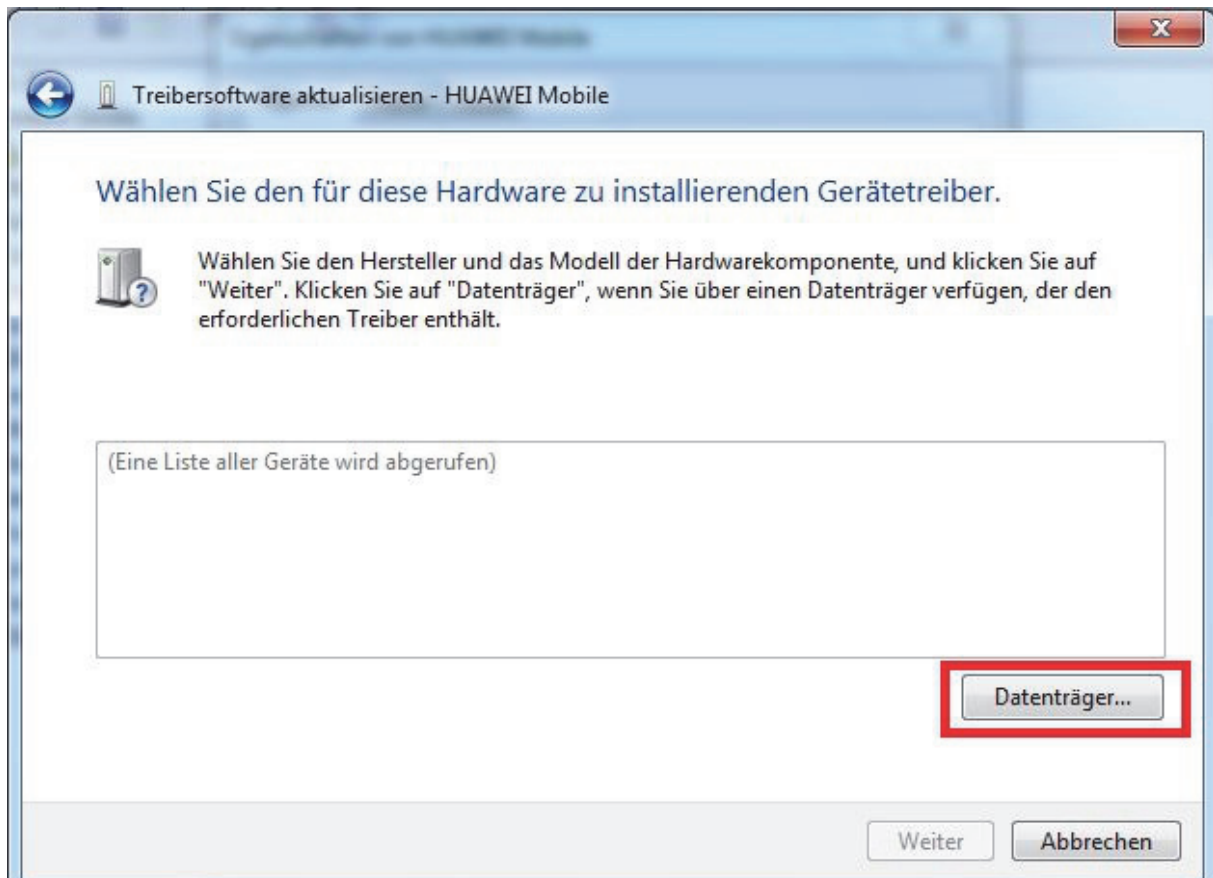
Nach doppelklicken auf das Setup wird das Grundgerüst des Treibers im Hintergrund installiert dies dauert ca. 1 Minute und geschieht ohne ersichtliche Fenster und Meldungen. / Double click on DriverSetup. Within approx. 1 minute it installs the drvier framework in the background.

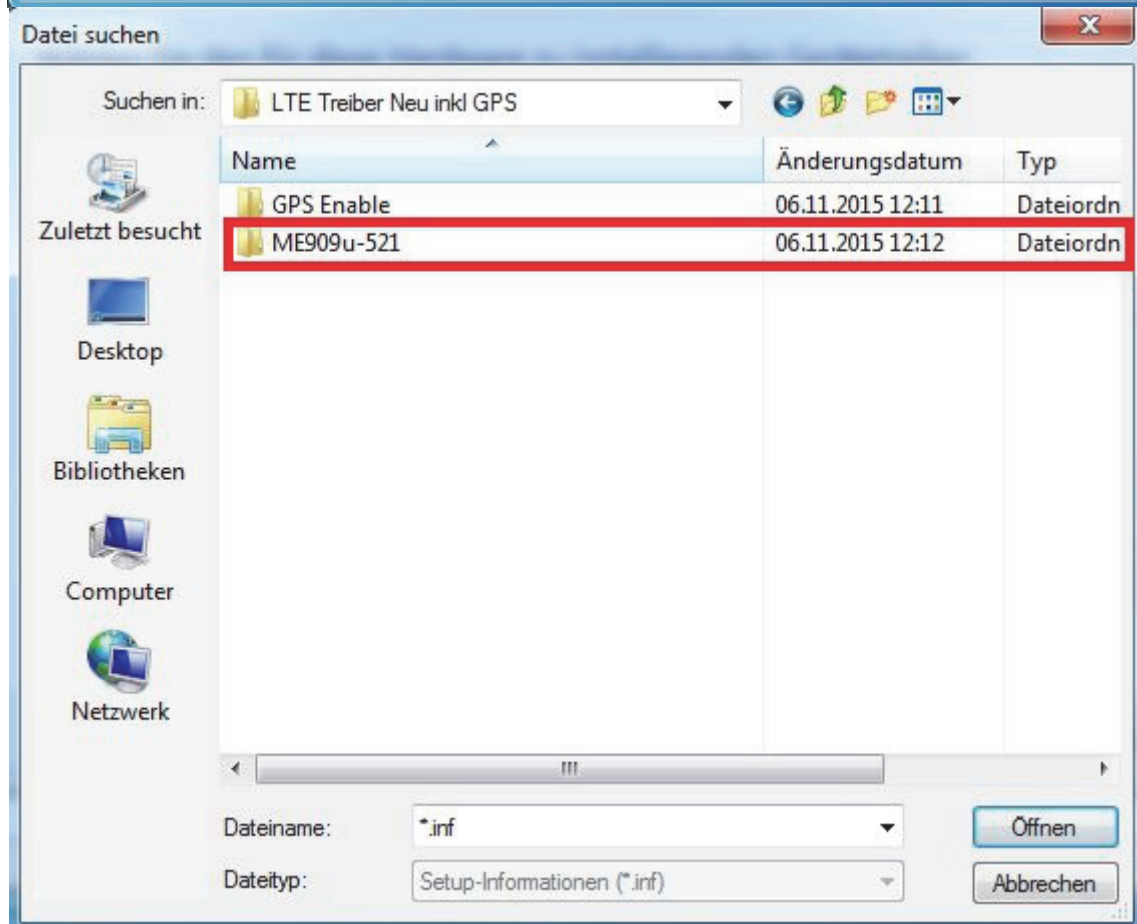
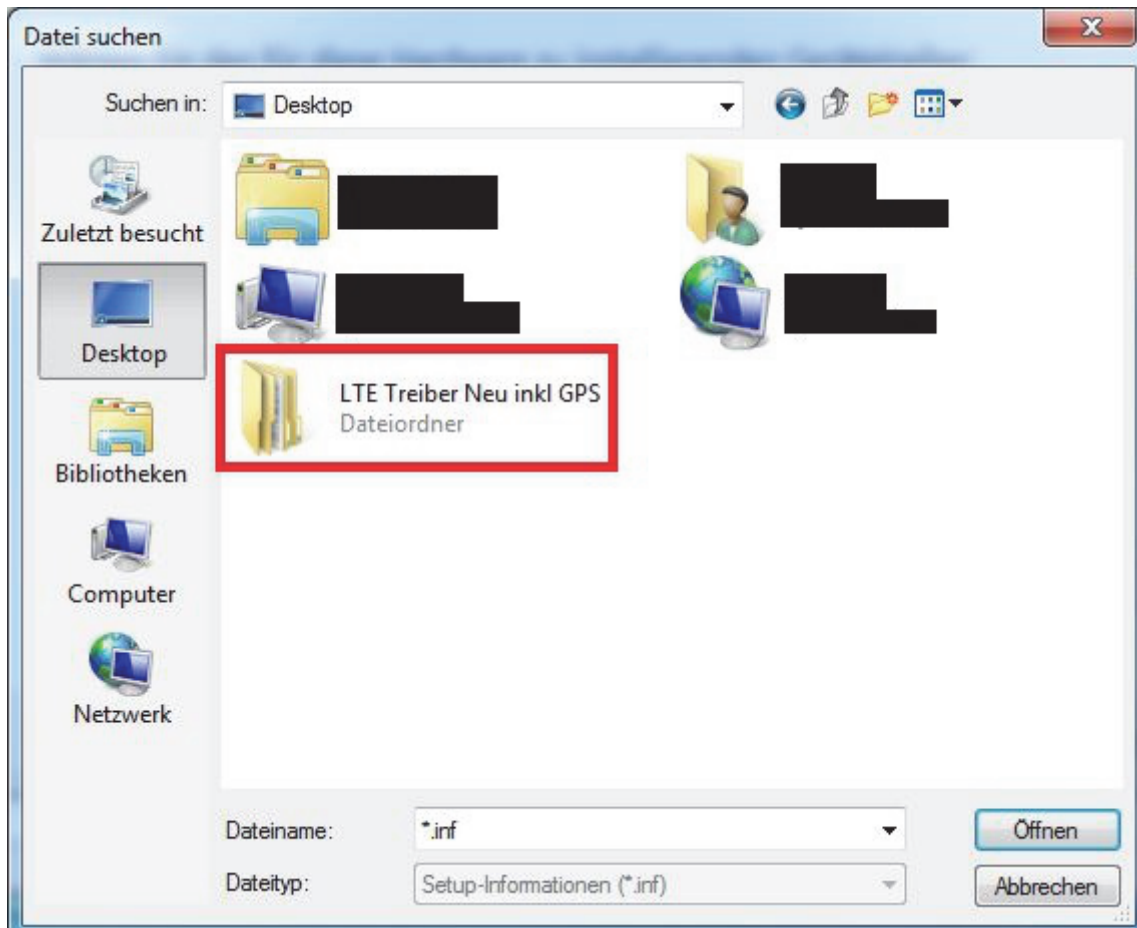
Nachdem die ca. 1 Minute vorbei ist bitte den Gerätemanager öffnen und wie fahren wie folgt fort / After one minute go to hardware manager.

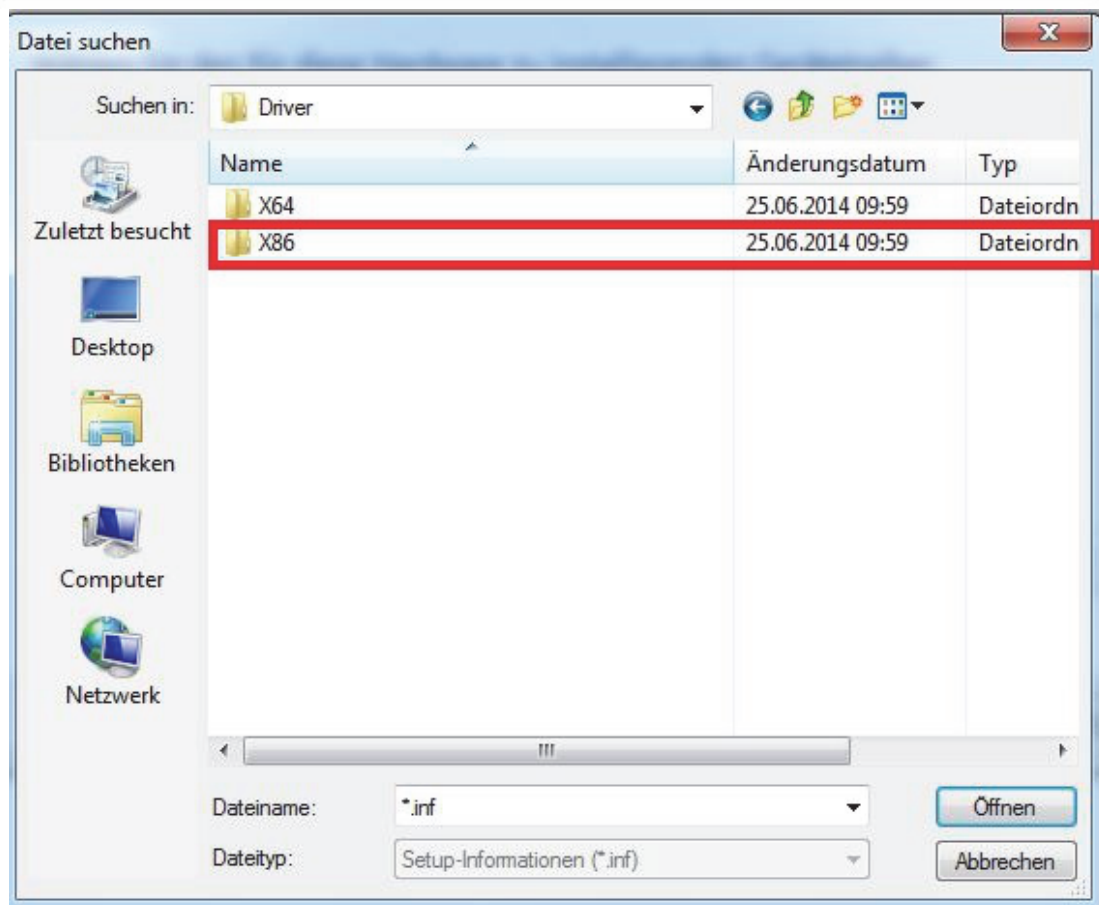
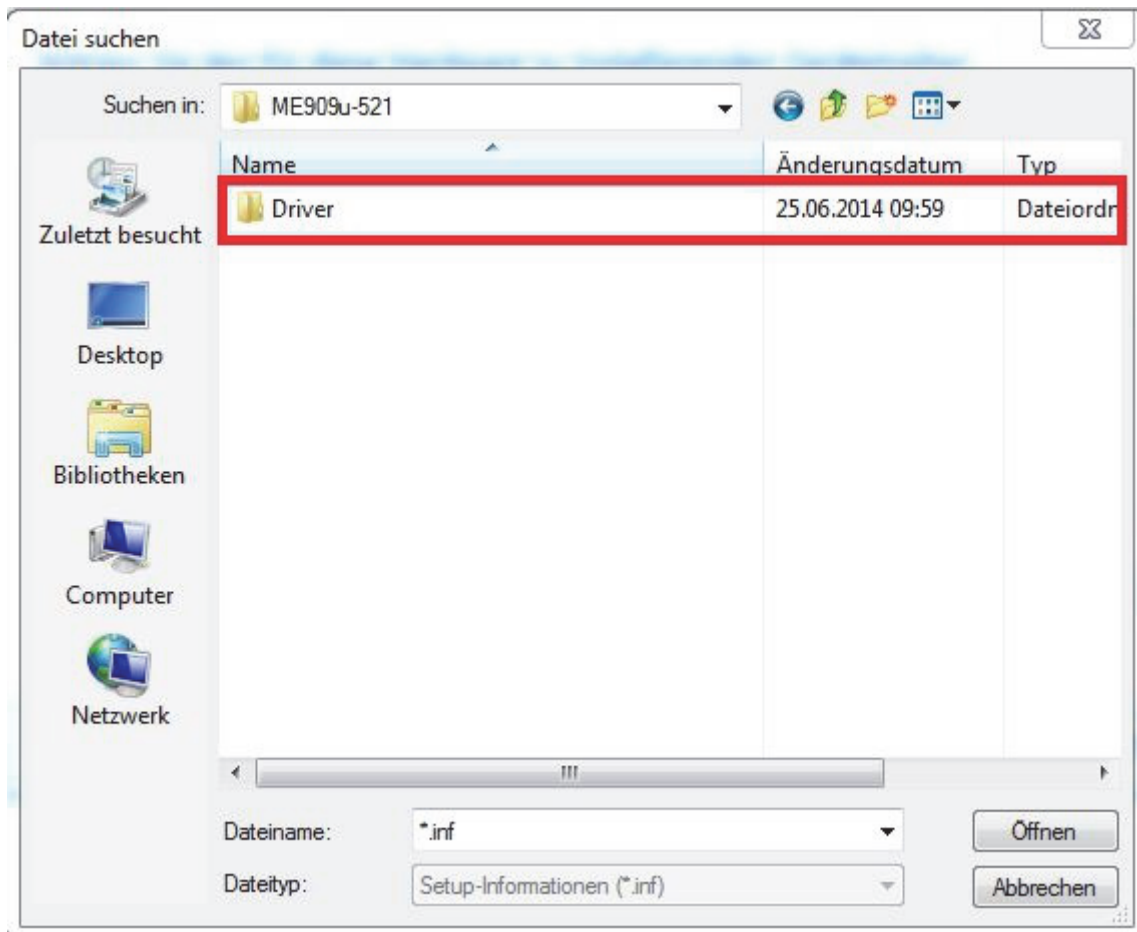




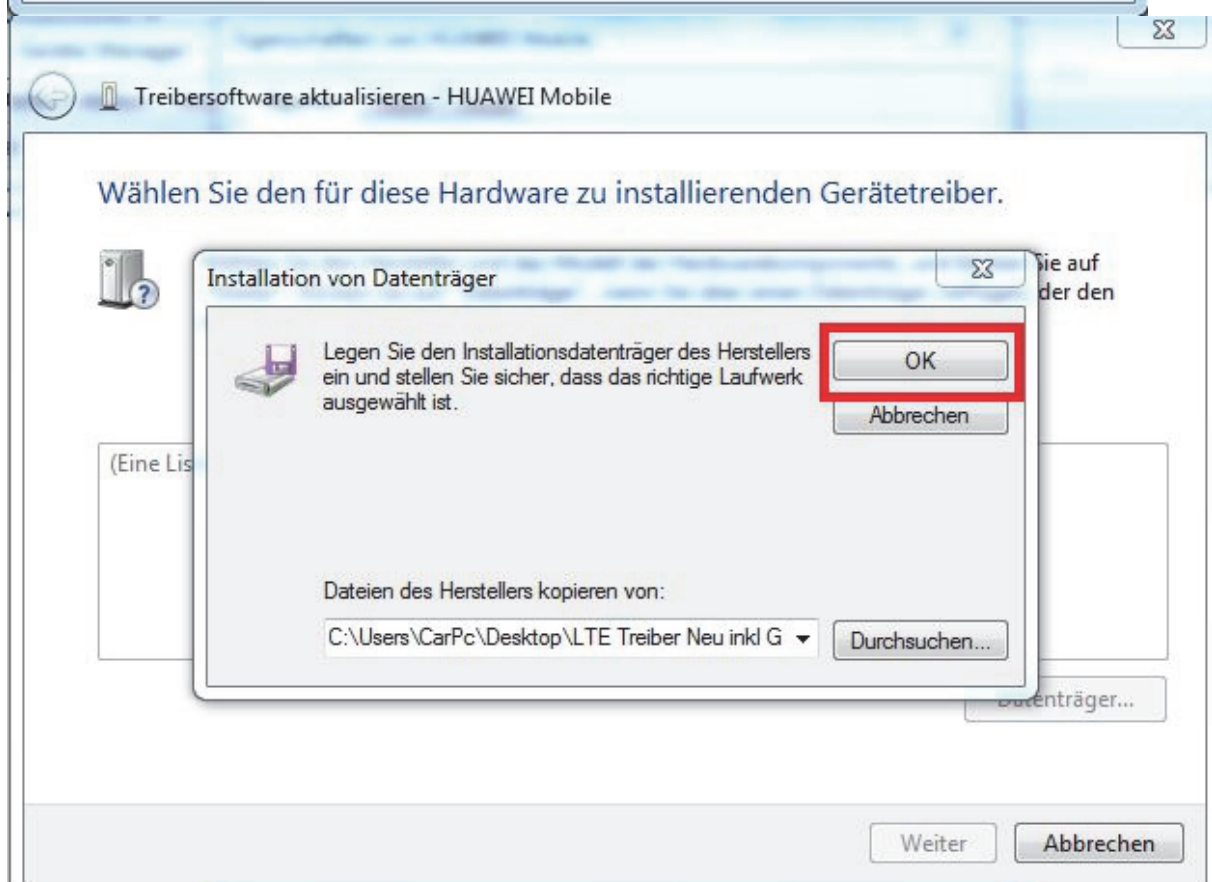
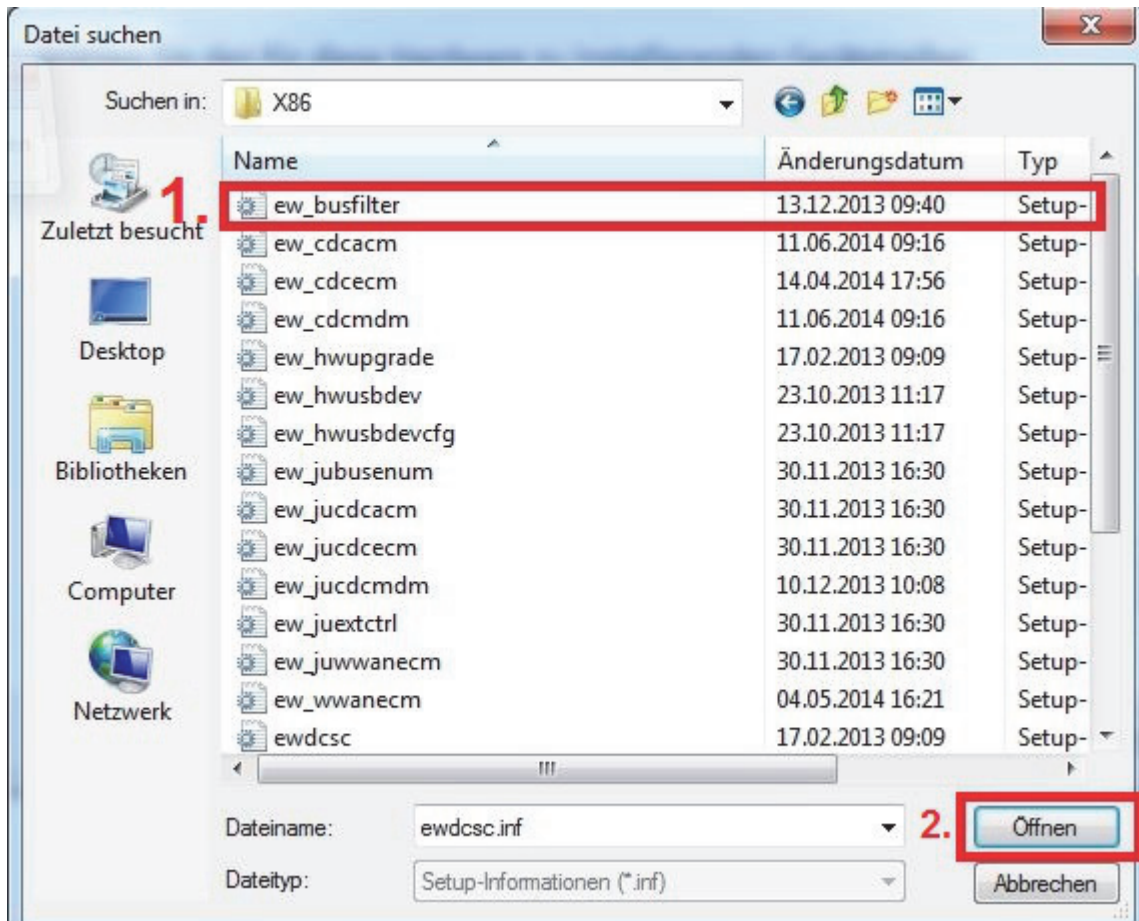


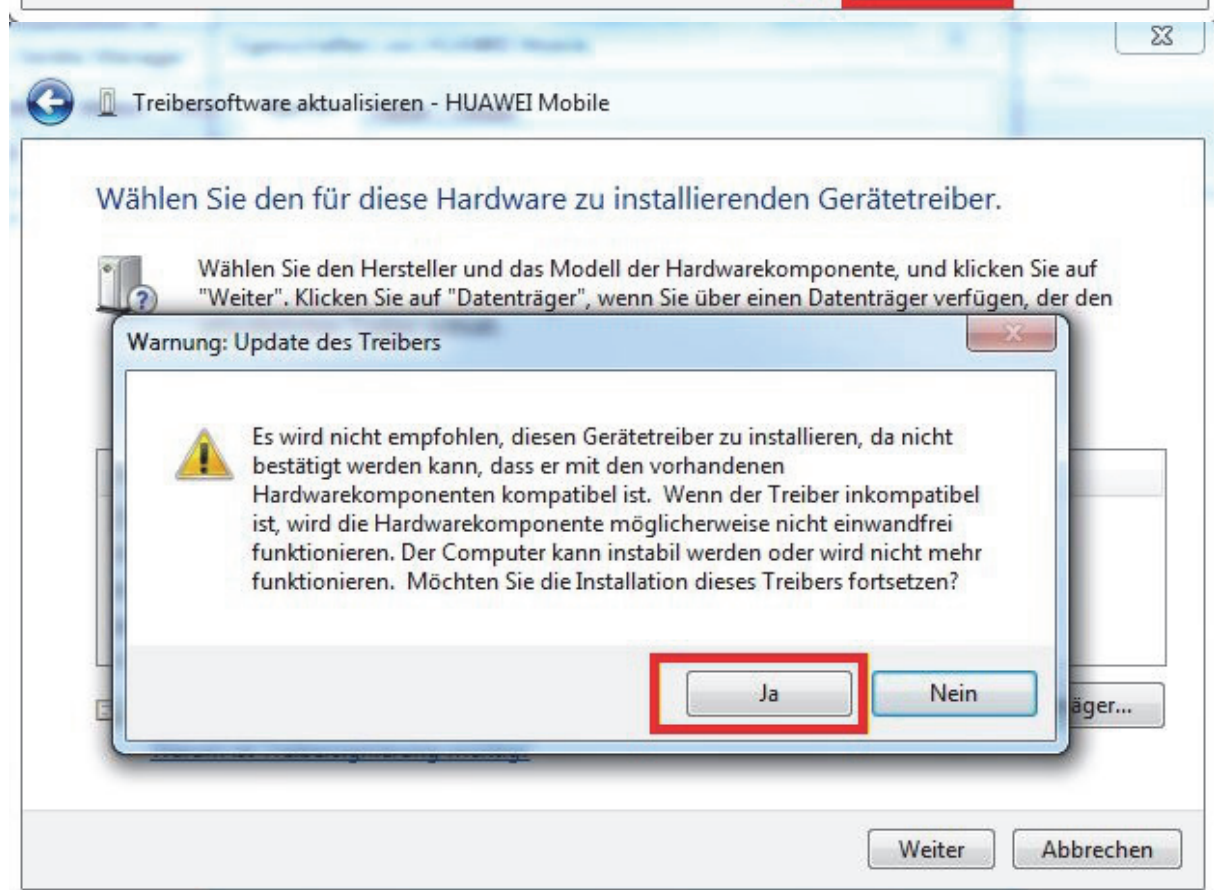
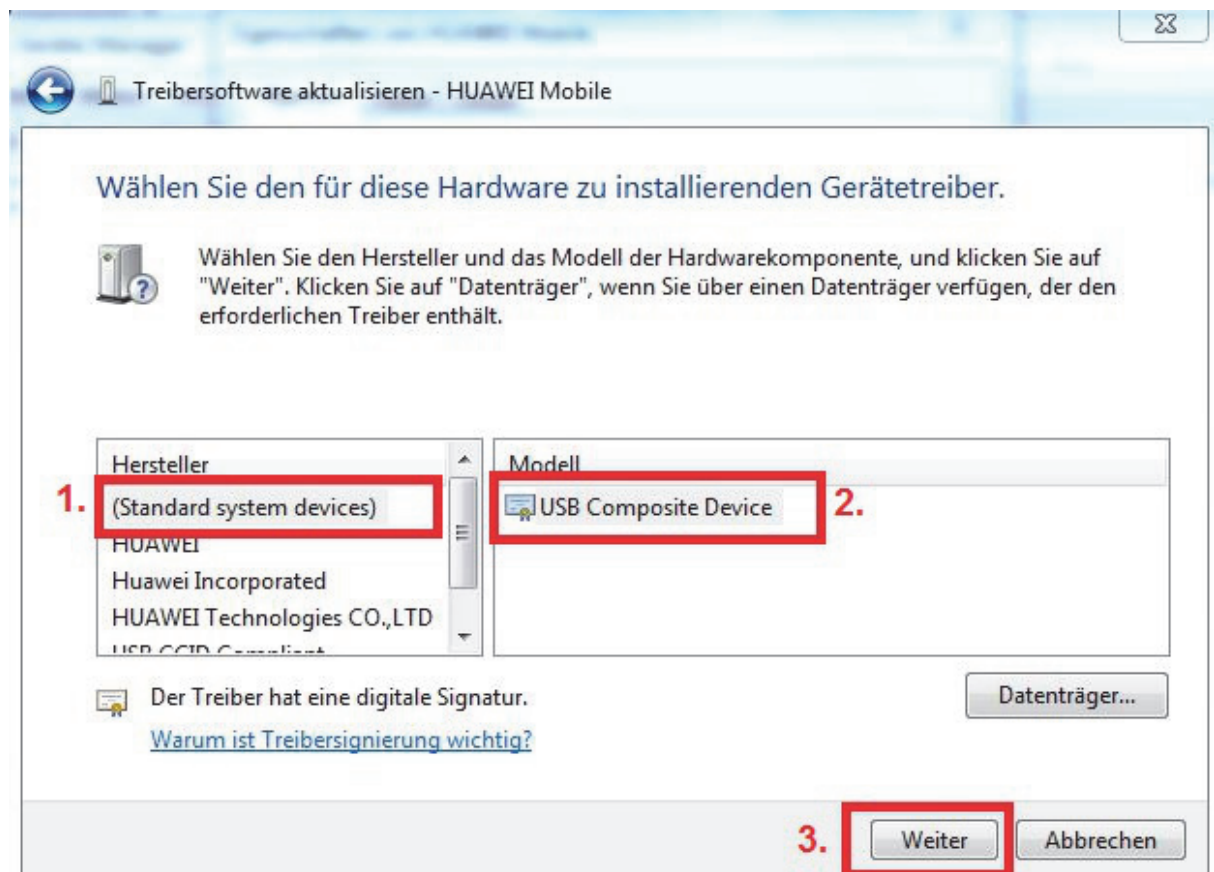


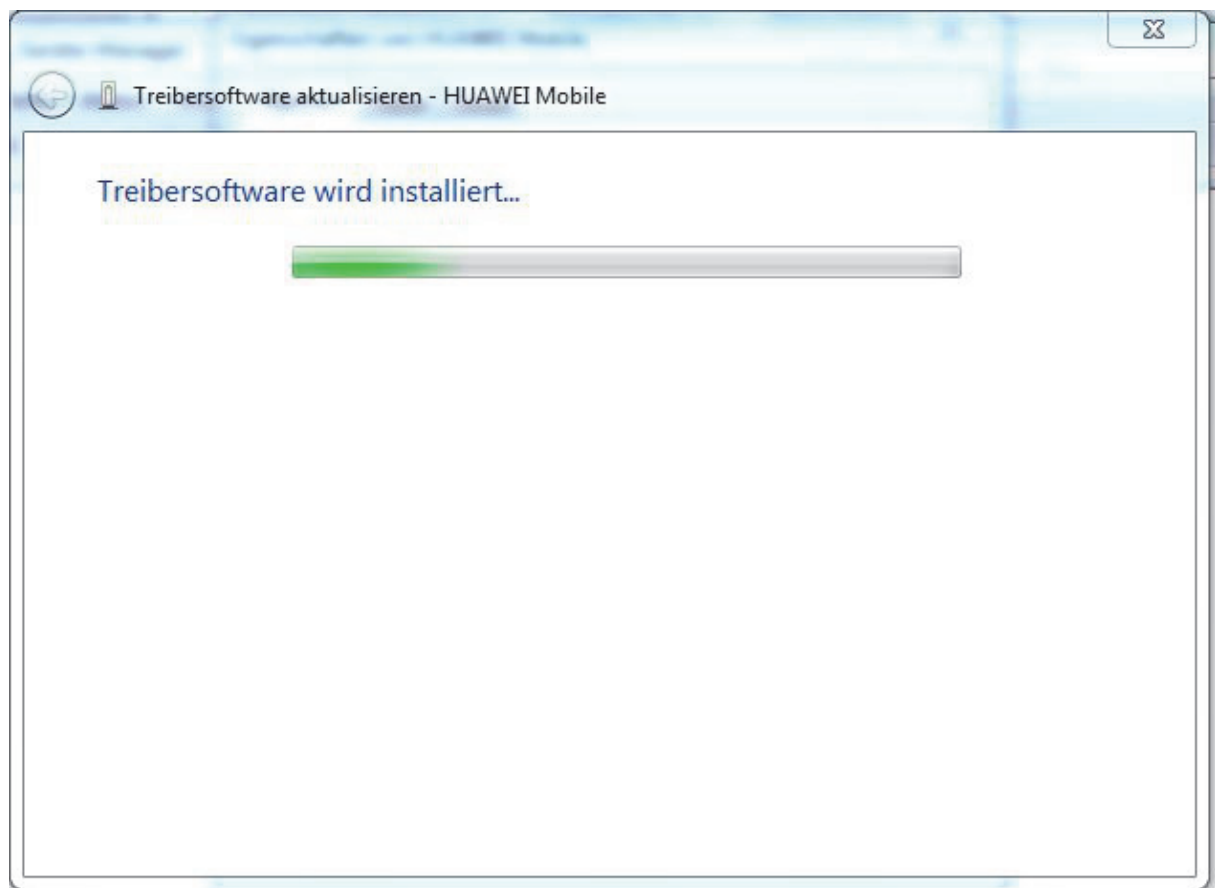


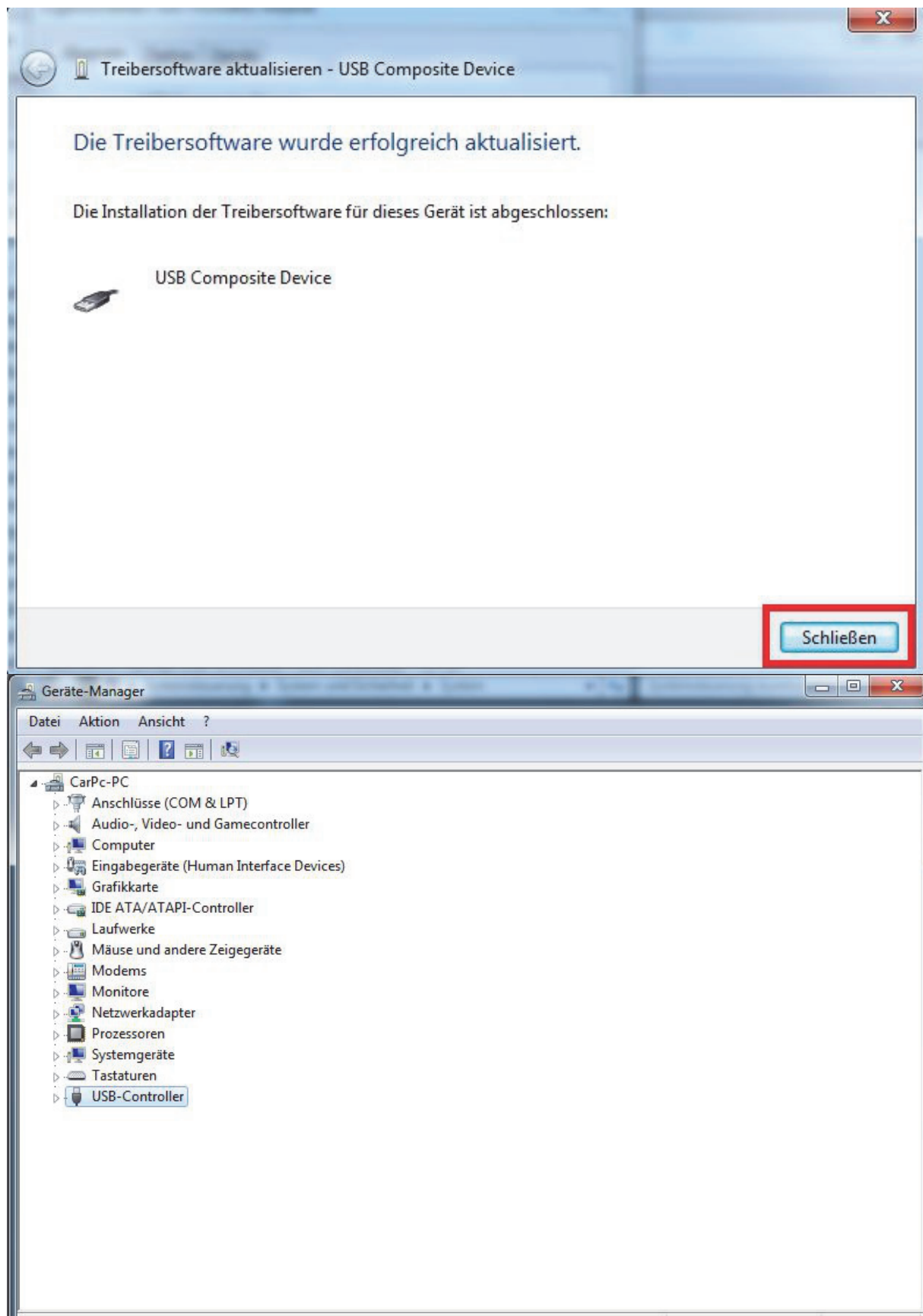


Hier bitte entsprechend Auswählen 32 bit / 64bit
(nachfolgende Schritte bleiben jedoch gleich)
/ Choose 32 or 64bit version now









Fertig / Done.

Stand : 09.11.2015
CarTFT.com